

Rowenta

4-Slice Toaster TO 90 TO 91

Instructions for use



Safety instructions

IMPORTANT SAFEGUARDS

When using electrical appliances, basic safety precautions should always be followed :

- 1• Read all instructions.
- 2• Never leave toaster unattended during use.
- 3• Keep out of reach of children.
- 4• Close supervision is necessary when the toaster is used by or near children.
- 5• Do not touch the metal parts or hot surfaces of the appliance when it is working. Use handles or knobs.
- 6• To protect against electrical shock do not immerse cord, plugs, or appliance in water or other liquids.
- 7• Unplug from outlet when not in use and before cleaning. Allow to cool down before cleaning and before putting on or taking off parts.
- 8• Do not operate any appliance with a damaged cord or plug or after the appliance malfunctions, or has been damaged in any manner. Return appliance to an approved Service Center for examination, repair, or adjustment, in order to avoid any risk of danger. See Warranty.
- 9• The use of accessory attachments are not recommended by the appliance manufacturer as they may cause injuries.
- 10• Do not let cord hang over edge of table counter or come in contact with hot surfaces.
- 11• Do not place on or near a gas or electric burner or near a heated oven.
- 12• Control lever must be in the "Up" position before attaching or disconnecting the plug from wall outlet.
- 13• Oversized foods, metal foil packages, or utensils must not be inserted in a toaster as they may cause an electric shock or fire.
- 14• Do not try to toast very thick slices of bread that could block the toasting mechanism.
- 15• If bread jams in the slots after toasting and the elements do not switch off, disconnect the plug immediately from the wall socket and wait for the appliance to cool before attempting to remove the bread. Do not attempt to dislodge food when toaster is plugged in.
- 16• Do not cover this appliance while in use.
- 17• Do not put paper towels, cardboard or plastic in, on or under the toaster.
- 18• There is a fire risk if the toaster is "covered" by, in contact with, close to or beneath flammable materials like curtains, drapes or wood.
- 19• Do not use outdoors. Avoid humid environments.
- 20• Do not use this appliance as source of heating or drying.
- 21• Do not use the toaster for cooking, grilling or de-frosting frozen foods other than bread products.
- 22• Do not use the toaster for toasting bread and re-heating pastries/croissants at the same time.
- 23• The toaster must always be used in the upright position (not on its side or tilted forward or back).
- 24• Regularly remove crumbs from crumb tray.
- 25• This product has been designed for domestic use only. Any professional use, inappropriate use or failure to comply with the instructions will void the warranty.

Integrated warming plate :

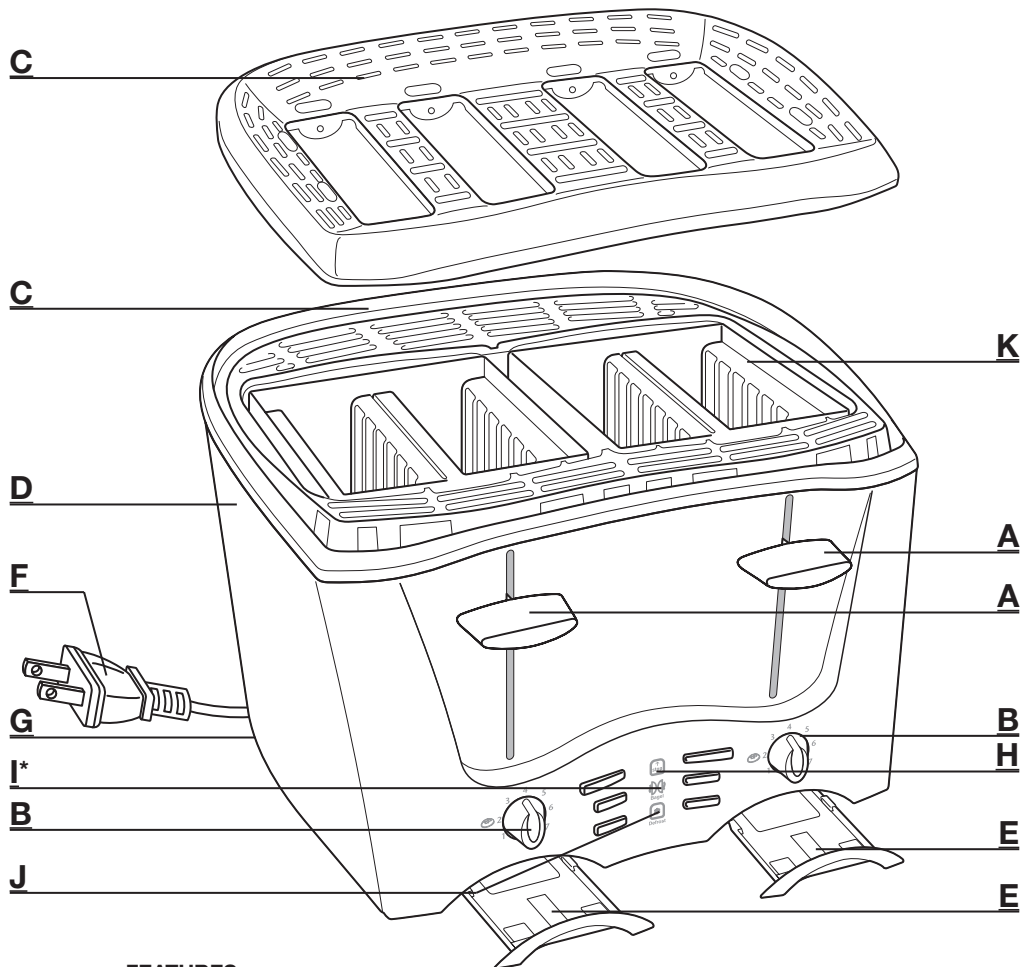
- Do not use the toaster without its warming plate.
- Do not touch the warming plate as this will be hot. Use gloves or breadtongs if necessary.
- Never place items other than bakery products on the warming plate or in the toaster.
- Use caution when warming or toasting sugar coated or filled items as they can melt in the toaster.
- Do not block or obstruct the air vents of the warming plate.

SPECIAL CORD SET INSTRUCTIONS

- (a) A short power cord is provided, to reduce risks resulting from becoming entangled in or tripping over a longer cord.
- (b) Longer extension cords are available and may be used if care is exercised in their use.
- (c) If a longer extension cord is absolutely necessary :
 - 1) The marked electrical rating of the extension cord should be at least as great as the electrical rating of the appliance.
 - 2) The cord should be arranged so that it will not drape the countertop or tabletop where it can be pulled on by children or tripped over unintentionally.
- (d) Do not unplug appliance by pulling on cord. Instead grasp plug and pull to disconnect.
- (e) Never wrap cord around toaster. Use cord storage on the underside of unit.

PRODUCT IS FOR HOUSEHOLD USE ONLY.

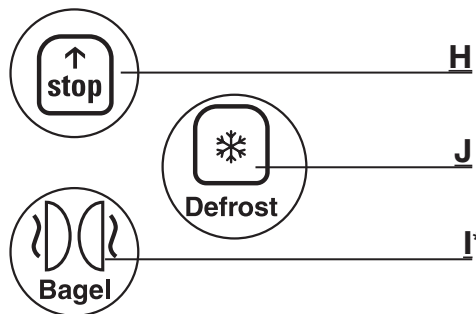
SAVE THESE INSTRUCTIONS



FEATURES :

- A** • Control levers with “HIGH-LIFT” position
- B** • Browning control knobs, 7 positions
- C** • Integrated warming plate (removable)
- D** • Cool touch body (or chrome finish*)
- E** • Removable crumb trays
- F** • Cord and plug
- G** • Cord storage
- H** • STOP/EJECT buttons
- I** • BAGEL buttons*
- J** • DEFROST buttons
- K** • Toasting slots

* Depending on model.



READ THE MANUAL AND CAREFULLY FOLLOW THE INSTRUCTIONS BEFORE USE.

BEFORE USING FOR THE FIRST TIME :

- Unpack the toaster and remove any labels.
- Wipe the toaster and the warming plate with a damp cloth then dry it.
- Unroll the electrical cord entirely and plug it in.
- Set the browning control to minimum without inserting any bread.
- Lower the control lever until it locks down.
- In order to remove any possible residues from manufacturing, the toaster should be heated twice before inserting any bread. A small amount of smoke may appear. This is normal and will quickly disappear.

HELPFUL HINTS

Differences in moisture levels from one bread to another can result in varying toasting times and browning levels. Below are some general recommendations :

- Slightly dry bread should be toasted on a lower setting.
- Very fresh bread or whole wheat bread should be toasted on a slightly darker setting.
- Breads with uneven surfaces, such as English muffins, may require a darker setting.
- When toasting items with fruit, such as raisin bread, remove any loose fruit before toasting.
- When toasting bagels, slice the bagel into two equal halves before toasting.
- If you are toasting one slice of bread, set the browning control at a lower setting.
- Use caution when warming or toasting sugar coated or filled items (such as toaster pastries). Always set the browning control to the lowest setting.

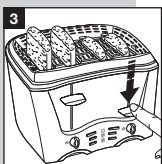
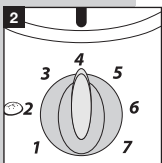
TOASTING AND "HIGH LIFT" FUNCTION

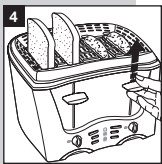
Never leave toaster unattended during use.

Use caution when toasting sugar coated or filled items (such as toaster pastries). Always set control to lowest setting. Instructions apply to both sides of the toaster. Both sides can be used at the same time at different settings.

- 1** With the control lever in the high position, insert the slice(s) of bread into the toasting slots.
- 2** Adjust the browning control to the desired setting depending on the type, freshness and the thickness of the bread.

1	Very slightly browned	4-5	Well toasted
2-3	Lightly browned	6-7	Very well toasted
- 3** To begin toasting, press down the control lever until it locks into the low position. The bread slices are automatically centered and the toasting begins. At the end of the toasting cycle, the toaster automatically stops and the control lever lifts up.

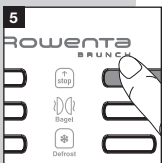




“HIGH-LIFT” FUNCTION

- 4** Use the “HIGH-LIFT” bread function by lifting the control lever when toasting has finished. This will raise the bread and make it easier to remove.

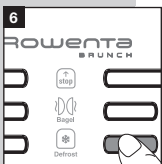
Do not use “HIGH-LIFT” during toasting.



STOP/EJECT FUNCTION

- 5** You can cancel the toasting or warming at any time by pressing the STOP/EJECT button.

Do not use the control lever to stop the toasting cycle.

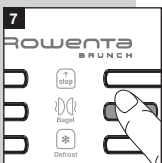


DEFROST FUNCTION

- 6** If toasting frozen bread, place in the toasting slots and adjust the browning control to the desired position.

Press the lever down and press the “DEFROST” button.

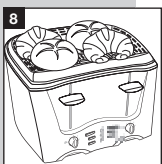
The bread will take longer to toast as the toaster will automatically defrost the bread first.



BAGEL FUNCTION*

- 7** This function uses only the external heating elements. Place cut side of bagel towards the outside of toaster.

- Select the browning level desired on the dial from 1 to 7.
- Press down the control lever then press the “BAGEL” button.
- Your bagels will be toasted on the cut side of the bagel according to the browning selection.
- At the end of the cycle, the bagels will pop up automatically and the toaster will switch off.
- If your bagels are too heavy, pull up the control lever to bring them out.

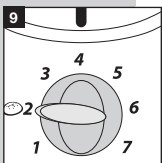


WARMING PLATE

Use the integrated warming plate feature to reheat croissants, rolls and other bakery products.

NEVER LEAVE TOASTER UNATTENDED DURING USE.

Use caution when warming sugar coated or filled items (such as toaster pastries). Always set control to lowest setting.

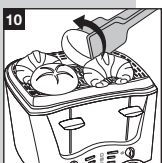


- 8** Place the bakery product(s) directly on the integrated warming plate ensuring that it does not hang over the edge of the plate.

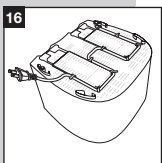
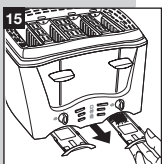
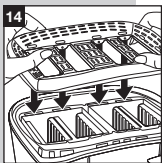
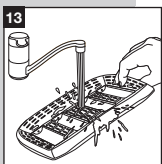
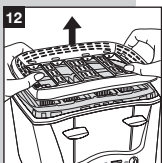
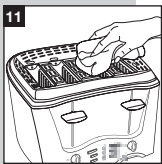
- 9** Set the browning control dial to the #2 position .

Lower the control lever until it locks into position. The toaster is now on and heat will rise to the warming plate.

The toaster stops automatically and the control lever springs up.



- 10** To heat the other side, turn the bakery product(s) over using oven gloves or bread tongs.



CAUTION : THE WARMING PLATE WILL BE HOT.

Do not press the control lever. Simply leave to warm for 30-60 seconds.

Cancel the toasting or warming cycle at any time by pressing the "STOP/EJECT" button.

MAINTENANCE, CLEANING AND STORAGE

Always unplug the toaster and let it cool before cleaning or handling.

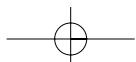
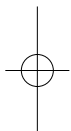
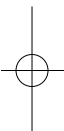
- 11** Wipe the outside of the toaster, the cord and the warming plate with a damp sponge and a mild dish detergent. Dry thoroughly.

For appliance with a metallic finish : Do not use any cleaning products designed for metals. Use a soft cloth with a window or glass cleaner.

- 12 13 For removal of the integrated warming plate :** Grip the metal warming plate by the middle and gently pull until it becomes detached. Clean with a mild dish detergent, then dry thoroughly.
- 14 Attaching the warming plate :** Insert the (8) tabs on the warming plate in the corresponding slots on the toaster and check that it is correctly in place before each use.

NEVER USE TOASTER WITHOUT THE WARMING PLATE IN PLACE.

- 15 To clean the crumb tray :** Pull out the tray completely. Remove the crumbs. Wipe it clean. Do this regularly, after each use. If crumbs or crusts remain inside the heating elements, remove the warming plate and turn the toaster upside down so that these remaining crumbs fall out. Replace the crumb tray and the metal warming plate carefully.
- 16 Cord Storage :** Wind the cord loosely in the storage area on the underside of the toaster.





ENVIRONMENT PROTECTION :

The packaging of your product is recyclable. Do not dispose of it with the rest of your waste but rather recycle the packaging or bring it to your nearest recycling facility.

LIMITED WARRANTY

All Rowenta products are warranted for 1 year from date of purchase against defects in material and workmanship. During this period, any Rowenta product that, upon inspection by Rowenta, is proved defective, will be repaired or replaced, at Rowenta's option, without charge to the customer. If a replacement product is sent, it will carry the remaining warranty of the original product. This warranty does not apply to any defect arising from a buyer's or user's misuse of the product, negligence, failure to follow Rowenta's instructions, use on current or voltage other than that stamped on the product, or alteration or repair not authorized by Rowenta. Repair or disassembly by anyone other than a Rowenta authorized service center will void the warranty. THE WARRANTIES SET FORTH HEREIN ARE EXCLUSIVE AND NO OTHER WARRANTIES, EXPRESS OR IMPLIED, INCLUDING BUT NOT LIMITED TO ANY WARRANTY OF MERCHANTABILITY OR FITNESS FOR A PARTICULAR PURPOSE OR USE, ARE MADE BY ROWENTA OR ARE AUTHORIZED TO BE MADE WITH RESPECT TO THE PRODUCT. If you believe your product is defective, bring the product (or send it, postage prepaid) along with proof of purchase to the nearest authorized Rowenta Service Center (see below). If you send the product, please include a letter explaining the nature of the claimed defect.

Rowenta Inc.
196 Boston Avenue
Medford, MA 02155
U.S.A.
Tel: (781) 396-0600
www.rowentausa.com

OFFICE LOCATION ONLY. FOR REPAIR INFORMATION SEE BELOW.

If your appliance needs service, ship the product to your nearest regional service center. Be sure to put your name on the outside of the shipping box. (No PO boxes please).
If in warranty, Rowenta will repair or replace the product at their discretion. If the product is out of warranty, you will be advised of the cost of repair before any work begins.

Our main service centers are listed below :

Turnpike Appliance
3495A Lawson Blvd.
Oceanside, NY 11572
516-483-5596

Authorized Appliance
1644 West Ogden Ave.
Downers Grove, IL 60515
630-852-1550

Service center information is subject to change.
Please visit our website at www.rowentausa.com
or call our **service center information line** at 781-306-4620
for current information and listings in California.

SUBJECT TO CHANGE

Ref. xxxxxx - May 2002

S.A. SEB - 21261 SELONGEY CEDEX - 302 412 226 R.C.S. DIJON